

Improved ramp geometrics at the existing interchange



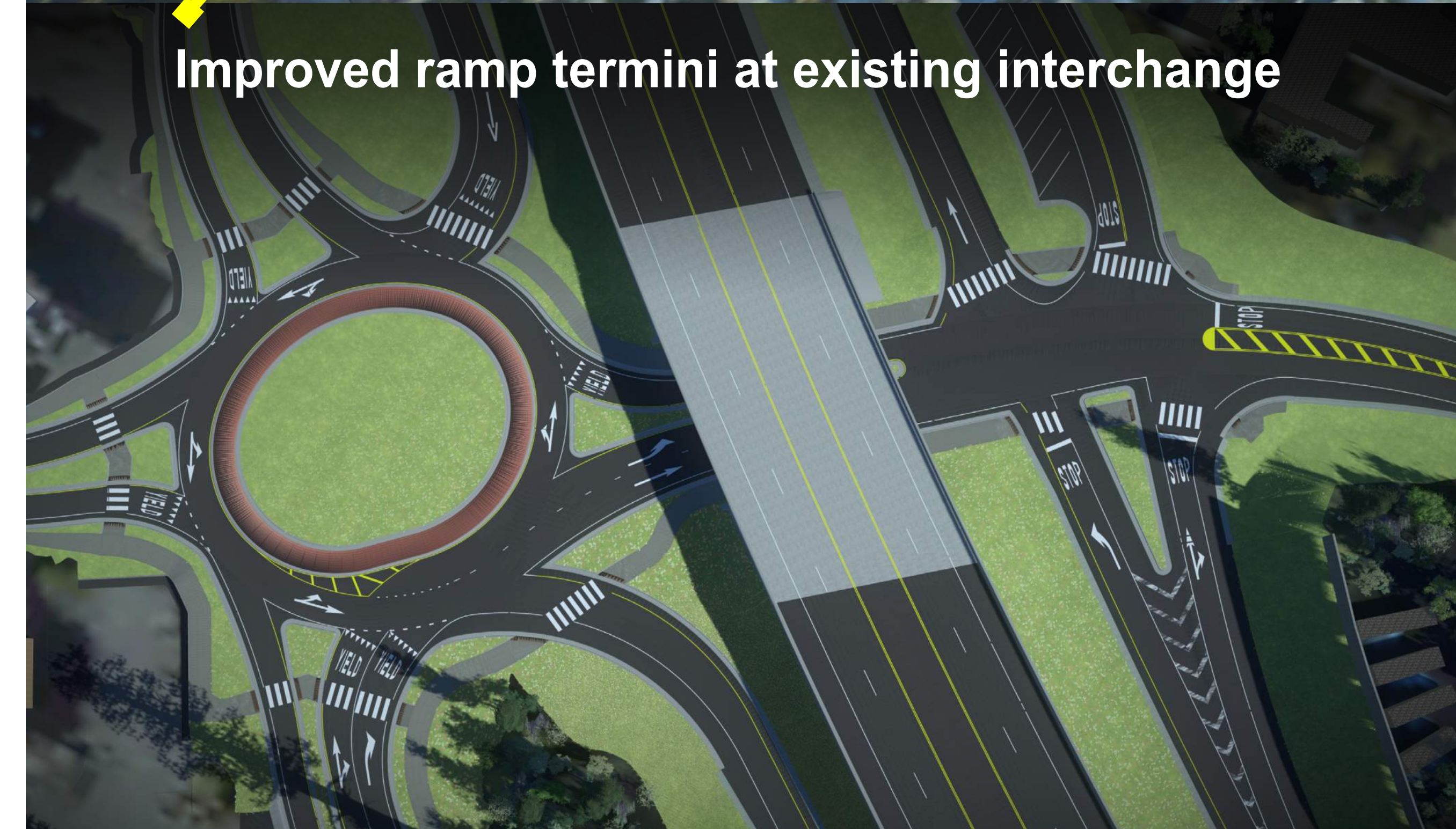
New three-span bridge carrying US 101



Roundabout at intersection along Cher-Ae Lane



New bridge crossing will consist of a wide multi-use path and will provide an emergency evacuation route



Improved ramp termini at existing interchange



New roundabout at 6-leg intersection at entrance to City of Trinidad



Scenic Drive will have improved geometrics, roadway departure countermeasures, and an 8-foot multipurpose path

# US 101 / Trinidad Area Access Improvement Project

## ALTERNATE 5C

