

A HSU MARINE LAB AND CICORE SHED FLOOR PLAN
N.T.S.

GENERAL NOTES:

1. ALL WALLS ARE 2"x4" #20F AT 16" ON CENTER WITH 8' PLATE HEIGHT.
2. EXTERIOR WALL INSULATION TO BE MIN. R-13 RATING.
3. EXTERIOR DOORS AND WINDOWS TO BE WEATHER STRIPPED.
4. ALL GUTTERS TO BE DRAINAGE PANEL, GALVALED AND SEALED.
5. DOORS AND WINDOWS TO BE CERTIFIED AND LABELED.
6. DOORS AND WINDOWS TO BE REMOVED UNTIL FINAL INSPECTION.
7. ALL HEADERS ABOVE DOORS AND WINDOWS ARE 4"x12" #20F U.O.N.
8. ALL WALLING TO BE DONE IN ACCORDANCE WITH SECTION 2304, 2007 CBC.
9. THESE PLANS WERE PREPARED TO COMPLY WITH THE 2007 CALIFORNIA BUILDING CODE. ALL SECTION OF THE CBC MUST BE STRICTLY ADHERED TO, SPECIFIED ON THESE PLANS OR NOT.
10. ALL LUMBER IS TO BE DOUGLAS-FIR, GRADE 2 OR BETTER, EXCEPT WHERE PRESSURE TREATED LUMBER IS SPECIFIED.

ITEMS TO REMAIN:

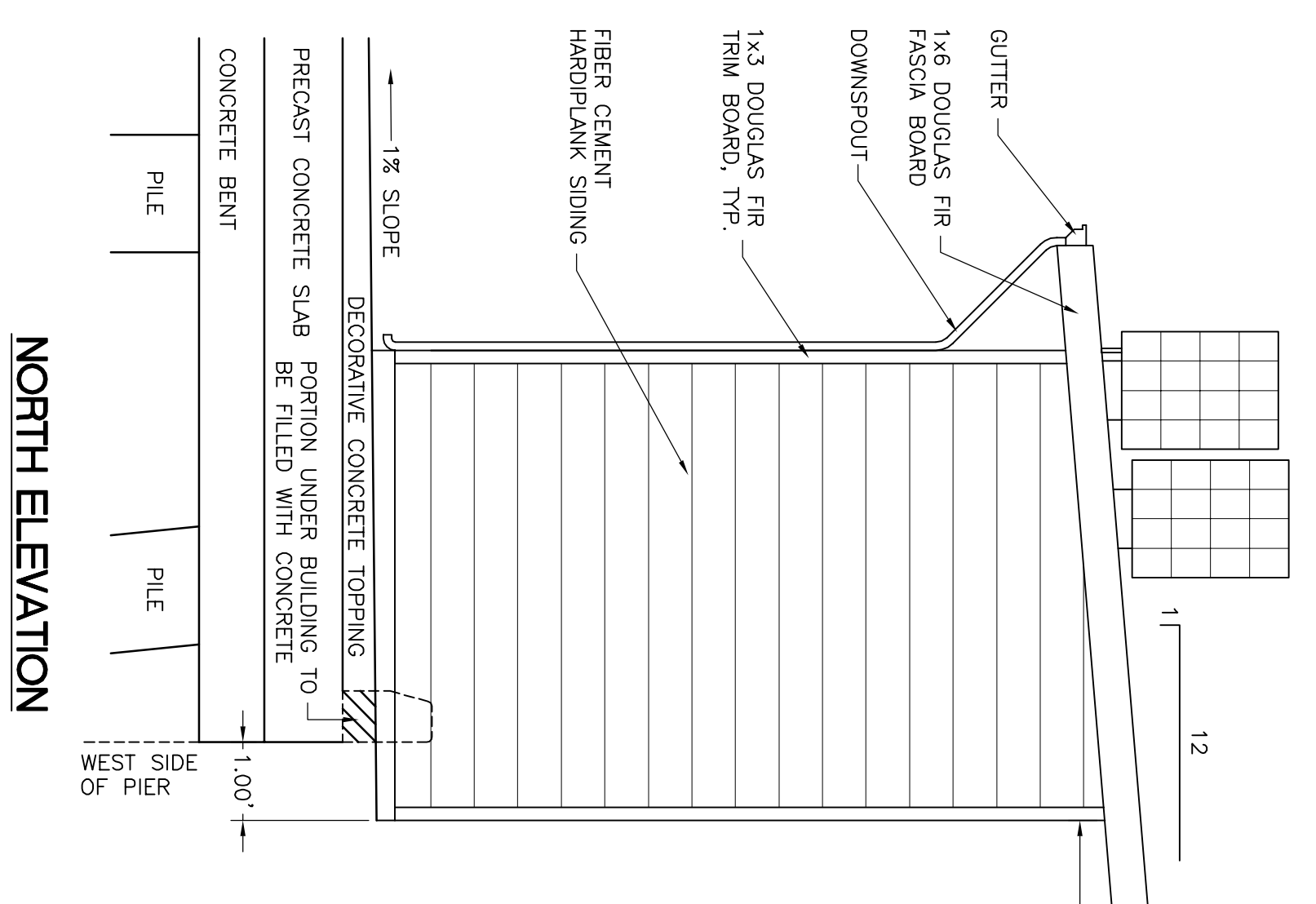
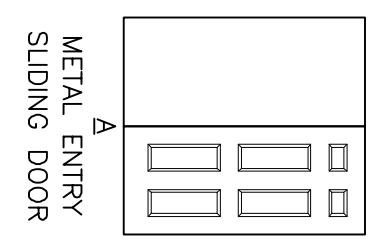
THERE ARE SEVERAL ITEMS IN THE EXISTING HSU MARINE LAB PLUMB HOUSE & CICORE SHED THAT WILL BE REMOVED AND REUSED. THESE ITEMS INCLUDE, BUT ARE NOT LIMITED TO:
 - 2.0" HP PUMP
 - PUMP DISCONNECTS
 - ELECTRICAL PANEL
 - PIPING FROM PUMP TO DRAIN, SUCTION, & DISCHARGE PIPE
 - ANTENNA ON CICORE SHED ROOF
 - 2 SOLAR PANELS ON CICORE SHED ROOF
 - FLEXIBLE PIPE FOR WATER QUALITY SONDE
 - 60000DS WATER QUALITY SONDE
 - 6200 DATA ACQUISITION SYSTEM
 CONTRACTOR TO MEET WITH HSU AND CICORE ON SITE PRIOR TO DEMOLITION TO OBTAIN FINAL LIST OF EQUIPMENT TO BE REMOVED AND REUSED.

DOOR SCHEDULE:

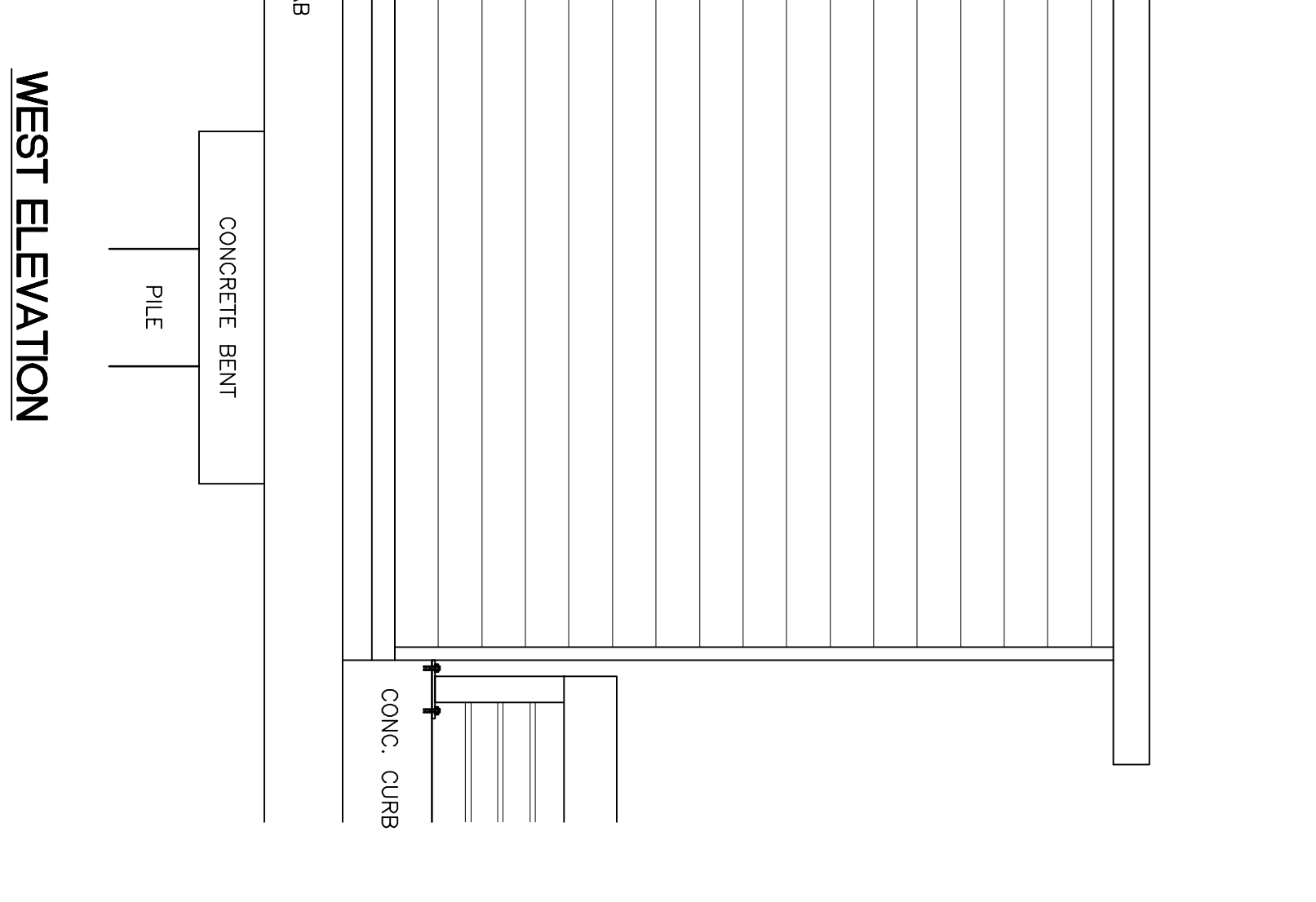
NO.	MATERIALS	WIDTH	HEIGHT	THICKNESS	TYPE	REMARKS
①	MRP	3'-6"	6'-8"	1 3/8"	A	1.2

MATERIALS:
MRP - METAL RAISED PANEL

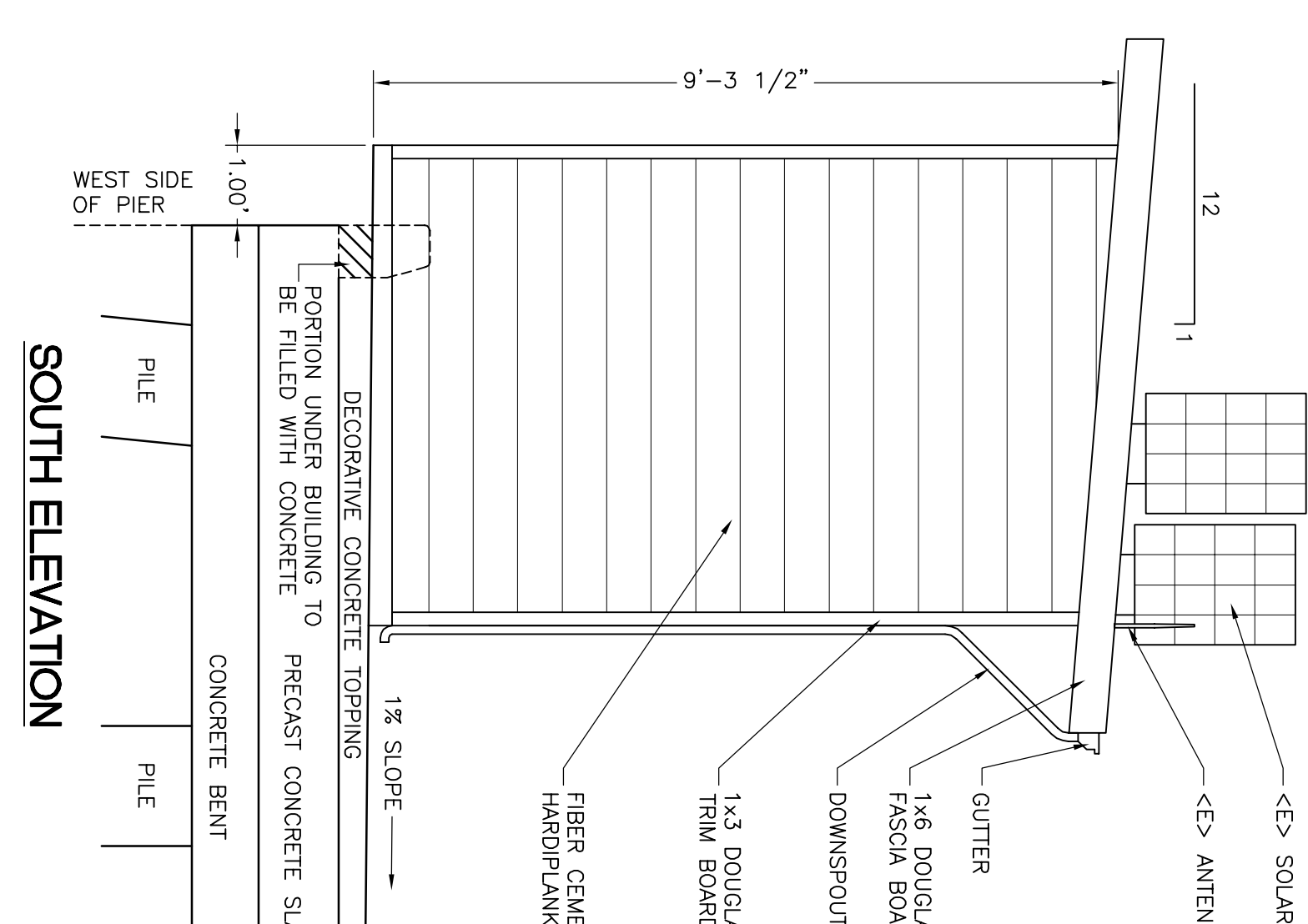
REMARKS:
1. PAINT DOOR
2. METAL THRESHOLD



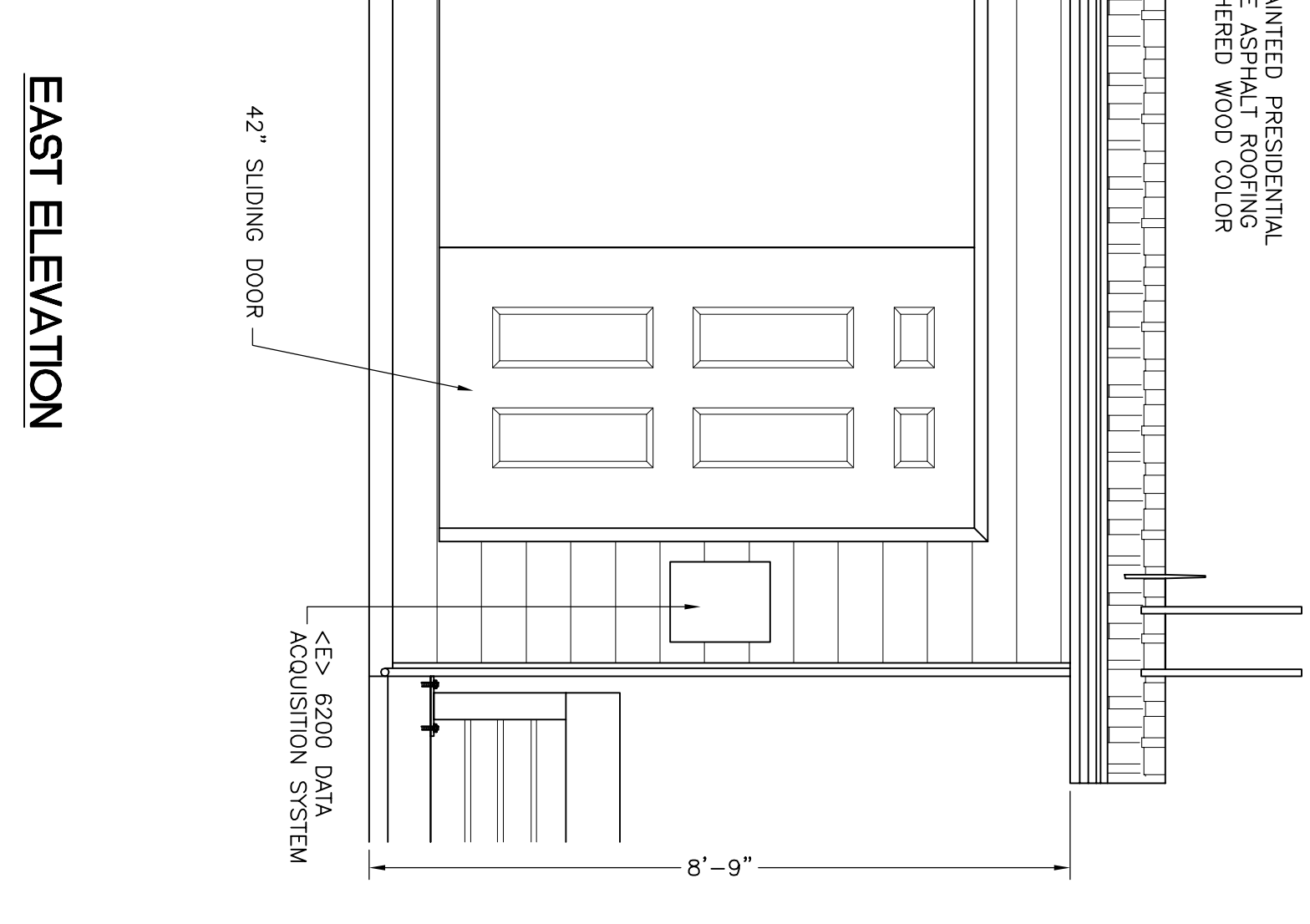
NORTH ELEVATION



WEST ELEVATION



SOUTH ELEVATION



EAST ELEVATION

B HSU MARINE LAB AND CICORE SHED ELEVATIONS
SCALE: 1"=2'

FOR PLAN REVIEW ONLY - NOT FOR CONSTRUCTION

REVISIONS	BY
10-19-09	JB
11-17-09	JB
12-22-09	JB
1-21-10	JB
5-13-11	JB

PACIFIC AFFILIATES
CONSULTING ENGINEERS
990 W. WATERFRONT DRIVE, EUREKA, CA 95501
TEL (707) 445-3001 • FAX (707) 445-3003

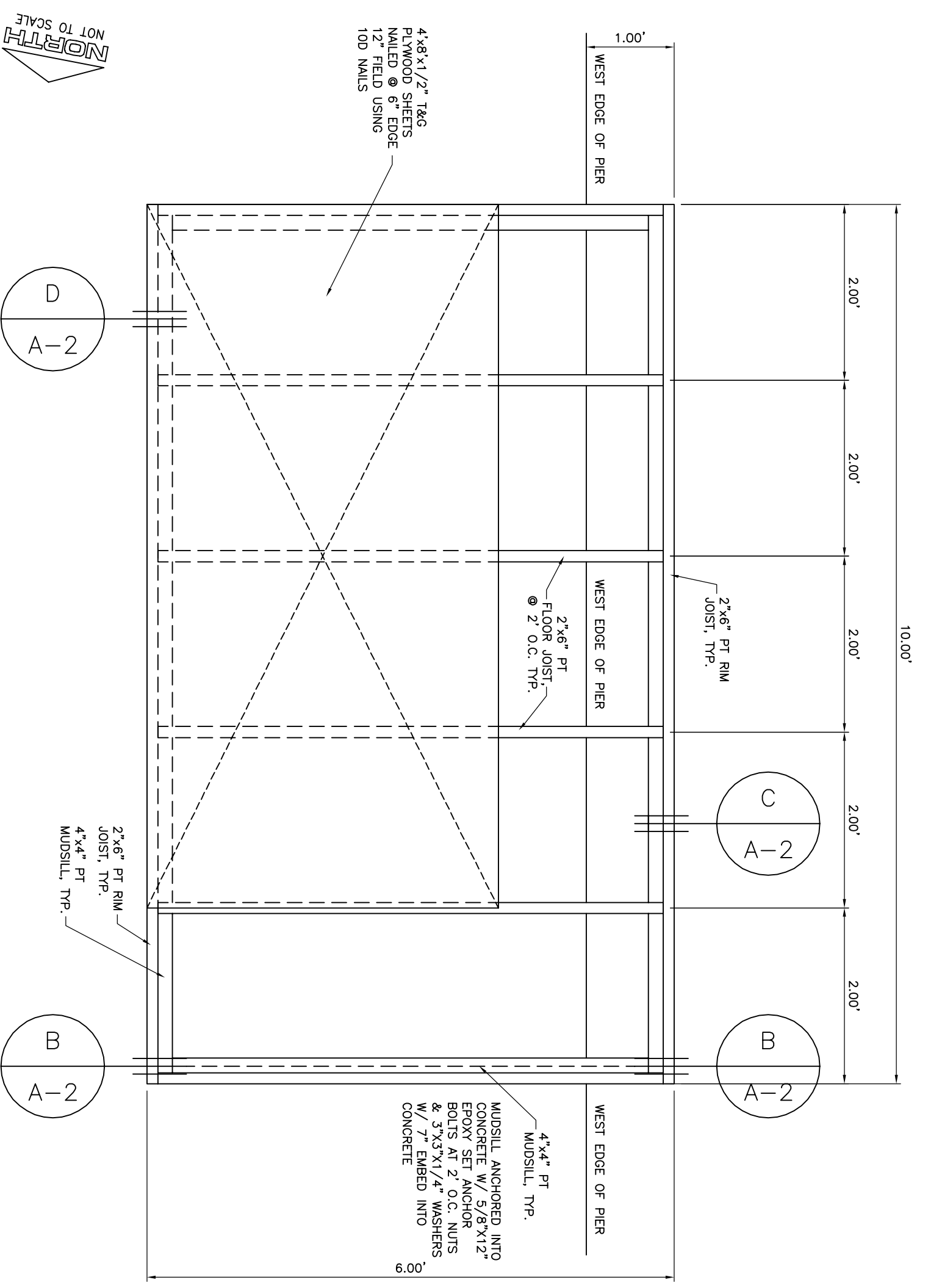
REGISTERED PROFESSIONAL ENGINEER
TRAVIS L. SCHREIER
67393
EXP. 12-31-2012
CIVIL
STATE OF CALIFORNIA

HSU MARINE LAB & CICORE SHED FLOOR PLAN & ELEVATIONS
PACIFIC AFFILIATES, INC. HEREBY EXPRESSLY RESERVES ITS COMMON LAW COPYRIGHT AND OTHER PROPERTY RIGHTS IN THESE PLANS. THESE PLANS AND DRAWINGS ARE NOT TO BE REPRODUCED, COPIED, OR COPIED IN ANY FORM OR MANNER WHATSOEVER WITHOUT FIRST OBTAINING THE EXPRESS WRITTEN PERMISSION OF PACIFIC AFFILIATES, INC. NOR ARE THEY ASSIGNED TO ANY THIRD PARTY WITHOUT FIRST OBTAINING WRITTEN PERMISSION AND CONSENT.

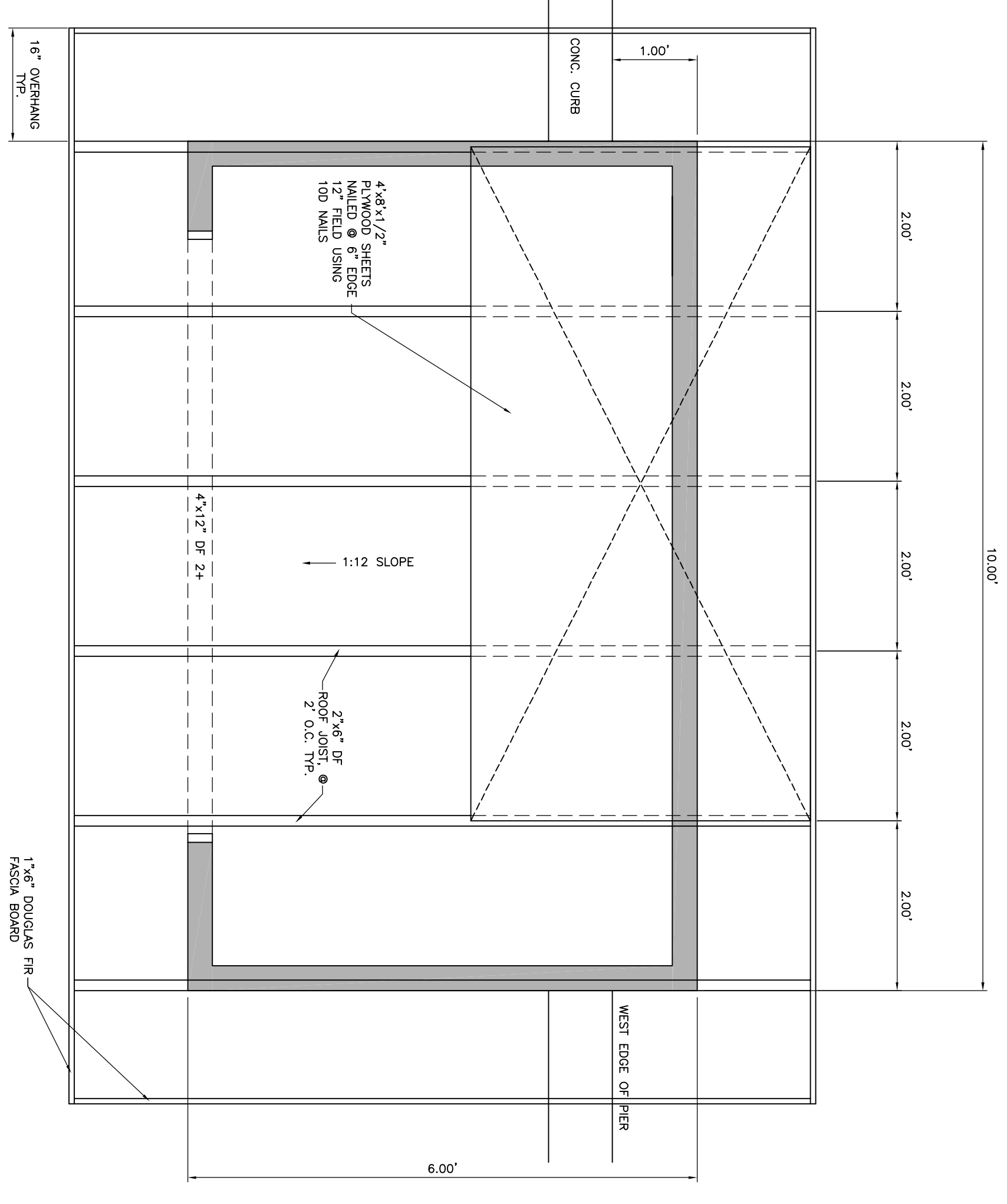
TRINIDAD PIER RECONSTRUCTION PROJECT
TRINIDAD RANCHERIA
P.O. BOX 630
TRINIDAD, CA 95570

Date: November 15, 2007
Scale: Drawn By: JB
As Noted

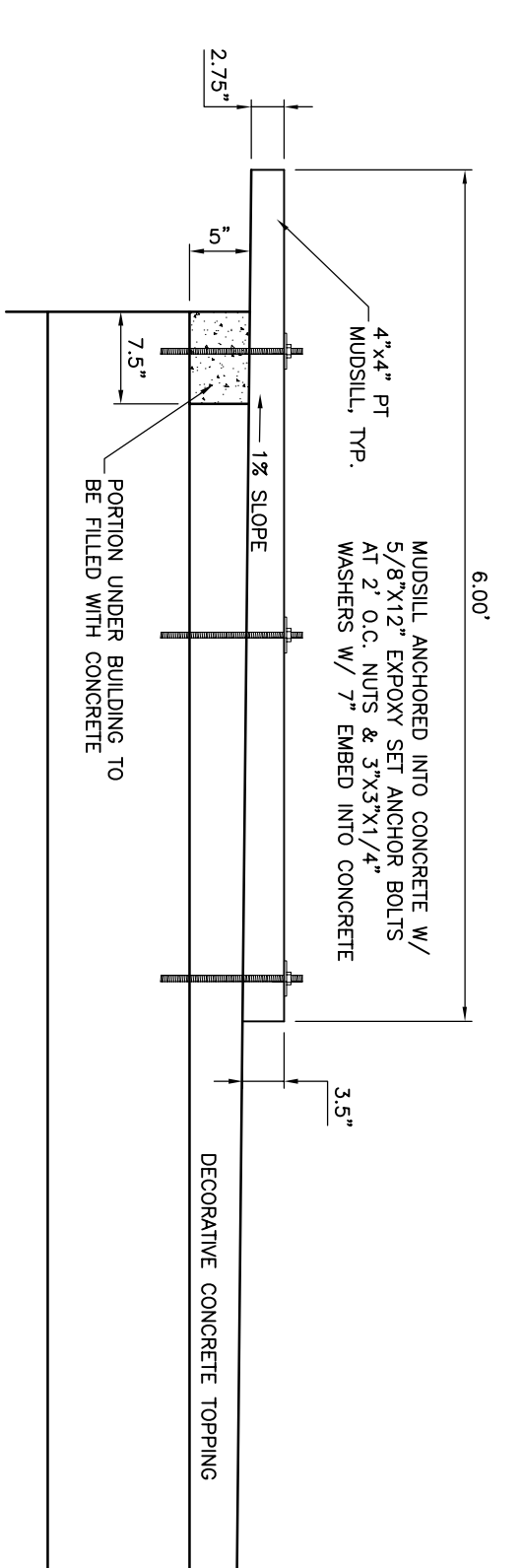
SHEET NUMBER
A-1
JOB NUMBER
06-1100



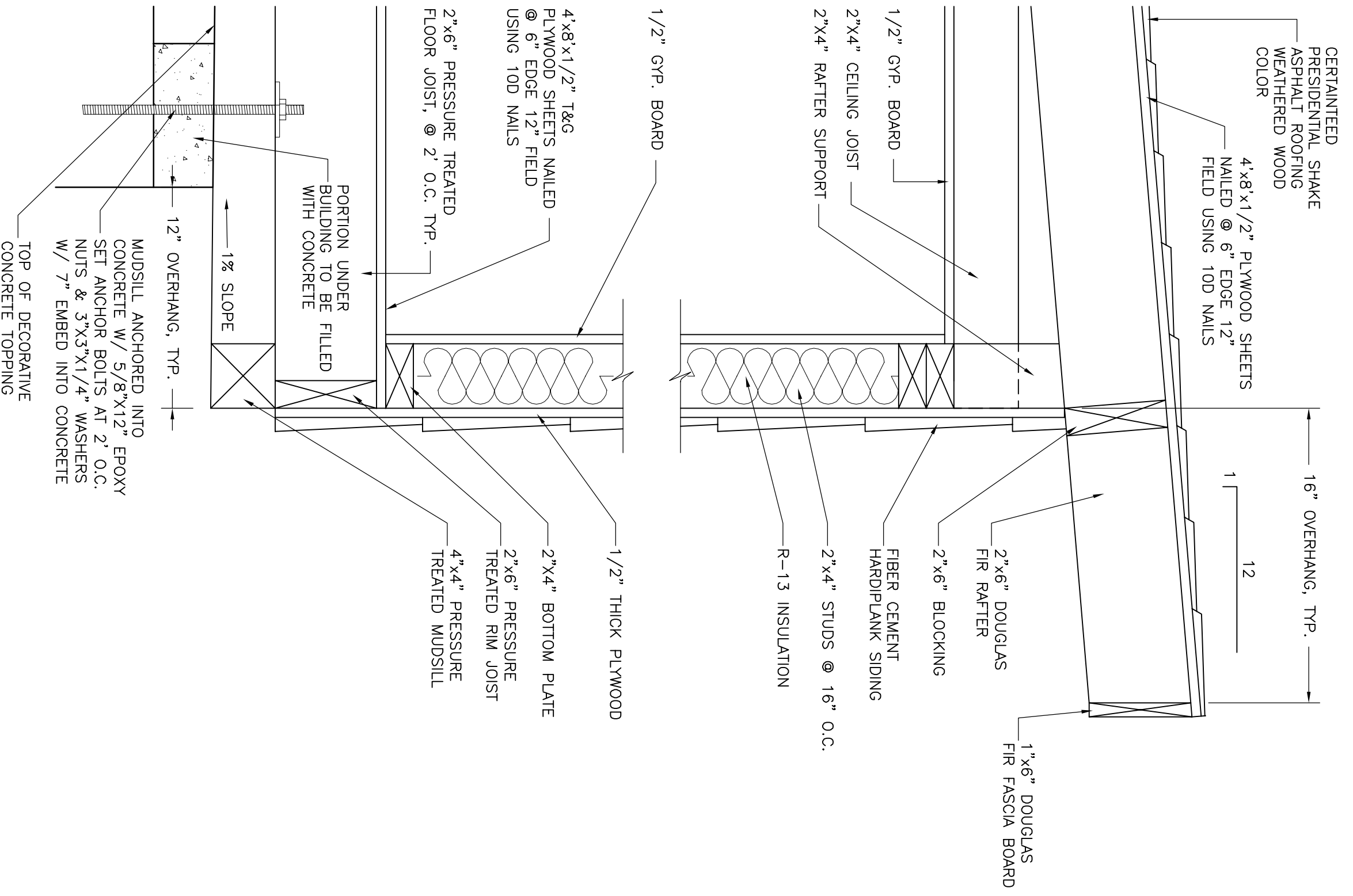
A HSU MARINE LAB AND CICORE SHED FLOOR FRAMING PLAN
N.T.S.



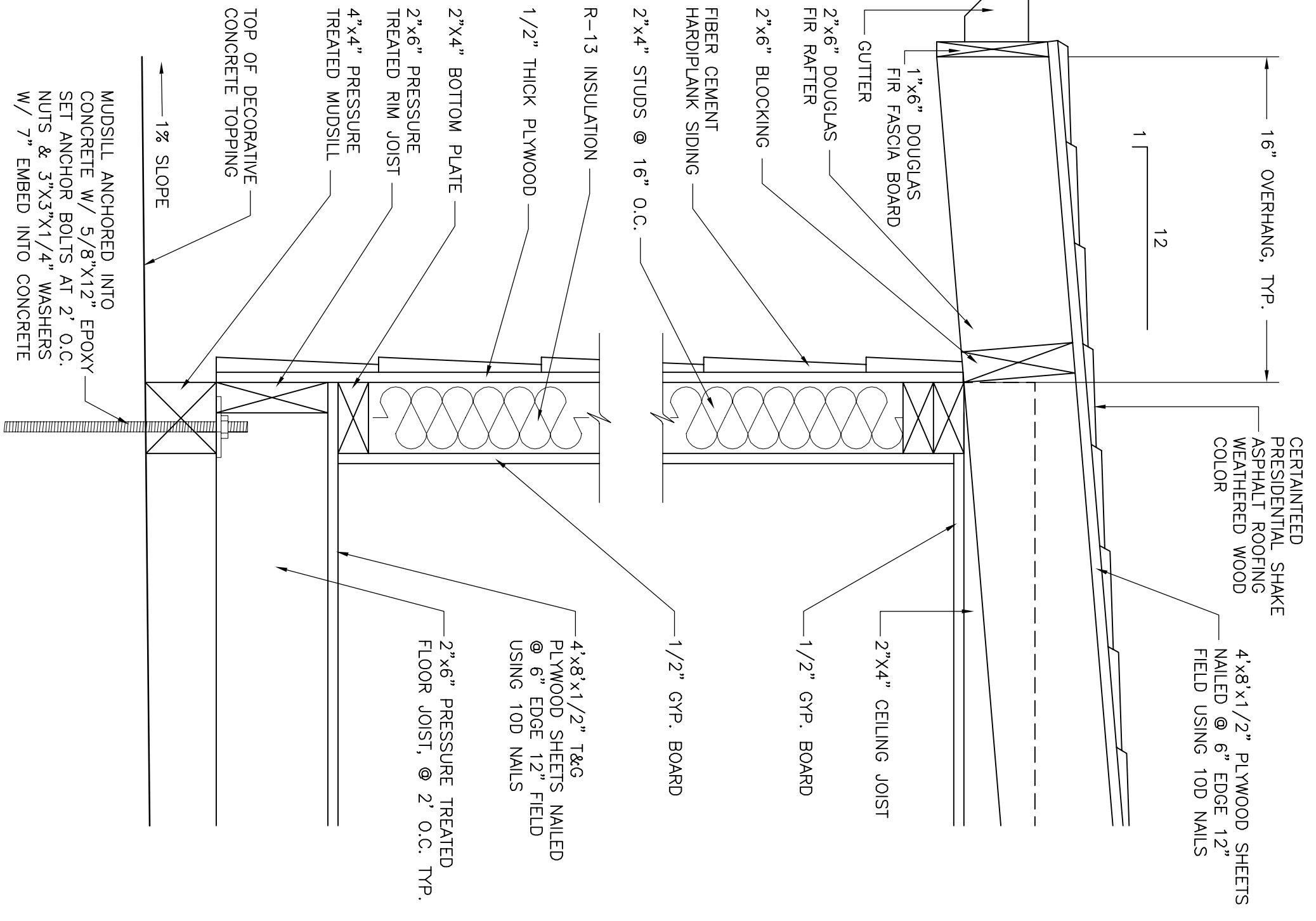
E HSU MARINE LAB AND CICORE SHED ROOF PLAN
N.T.S.



B SECTION B-B
N.T.S.



C SECTION C
N.T.S.



D SECTION D
N.T.S.

FOR PLAN REVIEW ONLY - NOT FOR CONSTRUCTION

REVISIONS	BY
10-19-09	JB
11-17-09	JB
12-22-09	JB
1-21-10	JB
5-13-11	JB



PACIFIC AFFILIATES
CONSULTING ENGINEERS
990 W. WATERFRONT DRIVE, EUREKA, CA 95501
TEL (707) 445-3001 • FAX (707) 445-3003



HSU MARINE LAB & CICORE SHED STRUCTURAL DETAILS
PACIFIC AFFILIATES, INC. HEREBY EXPRESSLY RESERVES ITS COMMON LAW COPYRIGHT AND OTHER PROPERTY RIGHTS IN THESE PLANS. ENGINEERING SERVICES AND DRAWINGS ARE NOT TO BE REPRODUCED, COPIED OR COPIED IN ANY FORM OR MANNER WHATSOEVER WITHOUT THE EXPRESS WRITTEN PERMISSION OF PACIFIC AFFILIATES, INC. NOR ARE THEY ASSIGNED TO ANY THIRD PARTY WITHOUT FIRST OBTAINING WRITTEN PERMISSION AND CONSENT.

TRINIDAD PIER RECONSTRUCTION PROJECT
TRINIDAD RANCHERIA
P.O. BOX 630
TRINIDAD, CA 95570

Date: November 15, 2007
Scale: Drawn By: JB
As Noted

SHEET NUMBER
A-2
JOB NUMBER
06-1100

